

SCIENTIFIC REPORTS

OPEN **Corrigendum: Arctic megaslide at presumed rest**

Wolfram H. Geissler, A. Catalina Gebhardt, Felix Gross, Jutta Wollenburg, Laura Jensen, Mechita C. Schmidt-Aursch, Sebastian Krastel, Judith Elger & Giacomo Osti

Scientific Reports 6:38529; doi: 10.1038/srep38529; published online 06 December 2016; updated on 17 May 2017

In Figure 1, the latitudes '80.5N' and '81.0N' were incorrectly given as '81.0N' and '81.5N' respectively. In addition, the scale between 0 km and 40 km was incorrectly given as between 0 km and 80 km. The correct Figure 1 appears below as Figure 1.

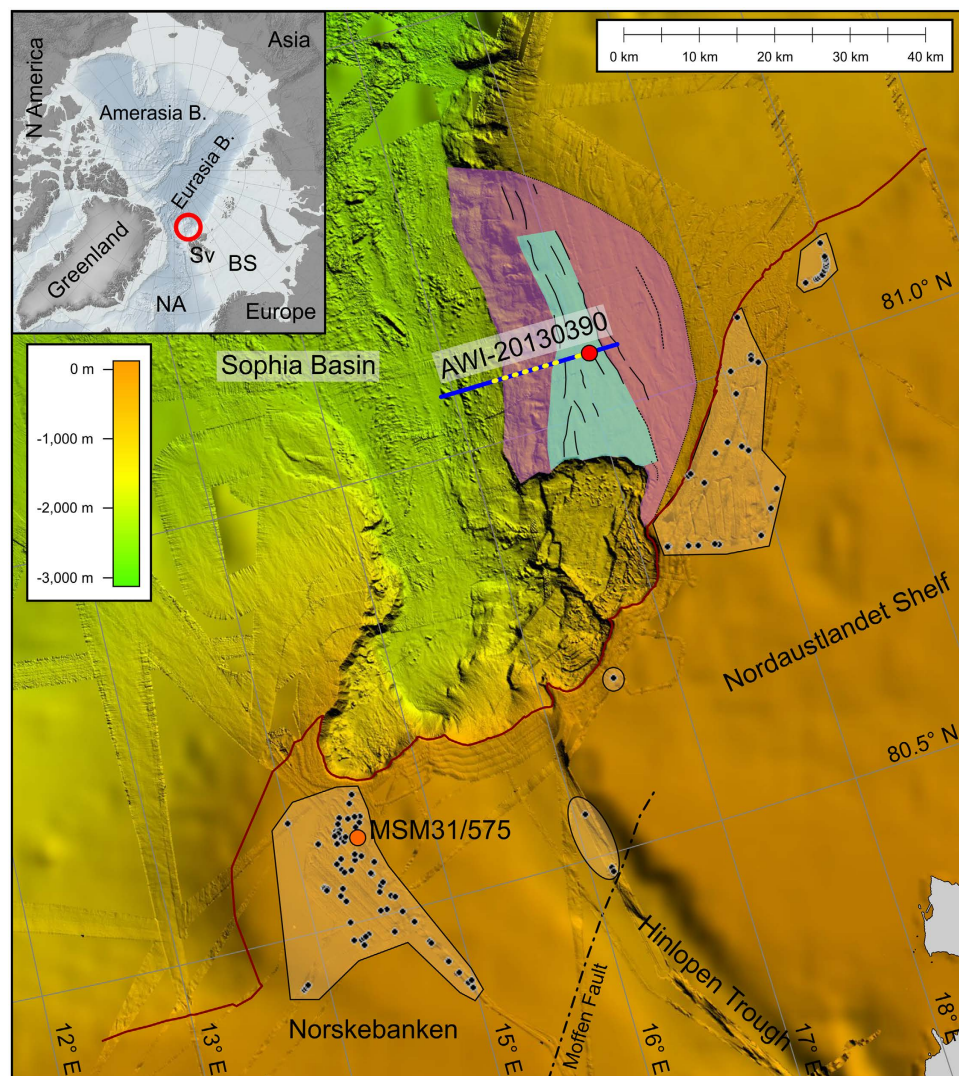


Figure 1.



This work is licensed under a Creative Commons Attribution 4.0 International License. The images or other third party material in this article are included in the article's Creative Commons license, unless indicated otherwise in the credit line; if the material is not included under the Creative Commons license, users will need to obtain permission from the license holder to reproduce the material. To view a copy of this license, visit <http://creativecommons.org/licenses/by/4.0/>

© The Author(s) 2017